

The Greenway News



The Yadkin River Greenway Council Newsletter

The Greenway... To Build And Preserve!

2018 – THE YEAR IN REVIEW INSIDE THIS ISSUE:

Annual March to Kings
Mountain Brings History
to the Public 2

New Bluebird Box Program
Ben Cleveland 3

Mulberry Fields to
Memorial Park
Connector Section 4

Volunteers At Work 5
6

The Greenway
Endowment Program 7

Fundraising 8
Friends and Contributors 9

Photos by Lynn Clark 10
Photos by Betty Owens 11

Become a Friends of the
Greenway Member 12

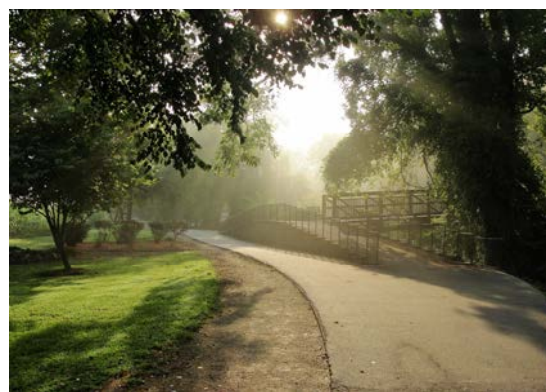
A Message from the President

“A *goal* without a *plan* is only a *dream*!”

Over the years, the Council's main goal has been to convert the dream of creating an outstanding greenway system into reality. In order to do that, constant planning and plan revisions have been a regular part of the Council's work load.

As we chronicle the past year of the greenway's growth and development, we celebrate the nearly 8.5 miles of “on the ground” greenway, along with the Memorial Park to Mulberry Fields connector, which is nearing completion as this goes to print. This project is further evidence that dreaming and planning have definitely paid off and that we are on the road to attaining our long term goal of constructing a world class greenway system in Wilkes County.

Thanks to the generous financial support of the community, 2018 was yet another great year for Greenway fund raising programs. In addition, generous funding by various corporate and governmental entities allowed the Greenway to continue to expand and help meet the recreational and physical fitness needs of the visitors and citizens of Wilkes County.



The Yadkin River Greenway

The Council would like to thank our partners in interest, the Towns of Wilkesboro, North Wilkesboro and Wilkes County.

They continue to do the heavy lifting on the day to day maintenance and sustain its growth and development. We thank them for their continued support, protection preservation of this valuable asset.

The keystone to 2018's planning was the development and implementation of the **Yadkin River Greenway Council Endowment Fund**. The endowments design is to help assure the legacy of the greenways continuation long after the work of the Council is done and the dream of a completed greenway system has been realized. Details and specifics of this endowment are covered shortly.

As always, I look forward to seeing **YOU!**
On the greenway!

Charlie White

Annual March To Kings Mountain Brings History To The Public



The OVTA has conducted the Annual March to Kings Mountain every year since 1975

Each fall, re-enactors with the Overmountain Victory Trail Association, (OVTA) a friends organization which partners with the National Park Service, conducts programs for over 15,000 people including school students, teachers and folks in communities along the Overmountain Victory National Historic Trail.

Once again in 2018, students from Wilkes and Surry School systems were invited to participate in field trips along the Yadkin River Greenway. During these excursions students enjoyed 18th century hands on demonstrations. They walked along sections of greenway that were once used by the “Overmountain Men” in 1780 in route to the Battle of Kings Mountain during the American Revolutionary War.

The Battle of Kings Mountain resulted in a Patriot victory and is considered, among military historians, as the turning point in the American Revolutionary War. The Overmountain National Historic Victory Trail was introduced in legislation by North Carolina’s own Congressman James T. Broyhill. Then it was approved by Congress and signed into law in 1980 by President Jimmy Carter.

Today the total trail length of the designated route is 330 miles. It passes through sections of Virginia, Tennessee, North Carolina, and South Carolina. Much of the Yadkin River Greenway follows very close to the original trail route. In some places the greenway aligns directly with the original route of the historic campaign.

The National Park Service has become an important partner to the Yadkin River Greenway. It has provided funding to install historic kiosks and construct a bus turnaround and parking area near Willow Lane. In addition, the National Park Service recently provided cost share funding from the Outdoor Foundation to help construct a portion of the Mulberry Fields to Memorial Park connector section of the Yadkin River Greenway.

Greenway Launches Bluebird Box Program

The Yadkin River Greenway is excited to promote a new program for Bluebirds on the Greenway. Specially made, colorful bird boxes are going up at strategic places along the Greenway. These bird homes are available to sponsor annually. Each one is numbered, and initially, we hope to place 25 up for adoption, renewable each year.

The first two boxes are adopted for 2019: Box #1 is dedicated to Frank Taracido, in honor of his many contributions to our Greenway. Box #2 is a Christmas gift for 2019 honoring my brother-in-law and wife, Steve and Pam.

Long term, we hope to have a more formal bluebird monitoring program in place, looking at bird counts, egg counts, fledging success, etc. For now, let's get some more boxes up and enjoy our home grown bluebird trail! (A huge shout out to all the Boy Scouts who have helped with bluebird boxes!)



Graham Wyche
Fundraising Chair, YRGC

Colonel Benjamin Cleveland, Leader at Kings Mountain

Wilkes County was instrumental in helping our nation secure freedom in the American Revolutionary War. During the Kings Mountain Campaign of 1780, Colonel Benjamin Cleveland led 350 men from Wilkes and Surry Counties to the Battle of Kings Mountain which took place on October 7, 1780. Cleveland was an important leader as he rallied his Wilkes County Militia during the Battle of Kings Mountain. The skill and rugged determination of the patriot militia force led to complete victory and to the surrender of the entire surviving loyalist force. The fierce battle lasted only about 1 hour!

During the Battle, Colonel Cleveland's horse was shot out from under him. As such, Cleveland needed a horse to return to Wilkes. As unfortunate luck would have it, the loyalists commander, Major Patrick Ferguson, was killed during the battle. Colonel Cleveland was presented with Ferguson's proud white Arabian horse as a spoil of war.



Painting by Don Trioni

After the Battle, Cleveland was also charged with the duty of marching the loyalist prisoners back to the Moravian Town of Bathabara which is north of present day Winston-Salem.

Years later, the horse died at Cleveland's farm which is located in present day Ronda. Over the years a ghost tale emerged! Local folk have reported seeing a ghost horse with a red coated officer, fitting Ferguson's description, roaming along the Ronda river bottoms at night.

A painting, which is located in the Wilkes Heritage Museum, depicts Cleveland mounted on his newly acquired and prized war horse, with prisoners in tow as he marches them to Bethabara Moravian Town.

RG Absher, Executive Director

Highlights of the Mulberry Fields to Memorial Park Connector Section



Construction on the Wilkesboro Avenue Bridge to Memorial Park Connector continued intermittently throughout 2018. These photos show the status of the project during late December 2018 after final grading and the installation of geo-fabric drainage structures, rock base and erosion control/soil stabilization measures had been completed.

The installation of the bridge across the drainage ditch is scheduled for completion during the last quarter of 2019.



Volunteer Work On The Yadkin River Greenway

Join us, be a volunteer! “In this busy world some special people have the art of taking time for others – giving from the heart” – Hallmark.

With Spring officially arriving in March all of us at the Yadkin River Greenway Council and the Volunteer Coordination Committee realize the importance of having the number of volunteers in our community who have the care, desire and passion to see the Yadkin River Greenway continue to be a beautiful and safe environment for all users.

Our volunteers soon will be working along our greenway corridors trimming shrubs, mulching, doing weed control, planting new flowers and removing trash from the trails. With looking forward to longer days and warmer weather, we hope you will get out and enjoy the sunshine and the work and efforts of our volunteers.

We are blessed and are fortunate to have these volunteers from our community who want to be a part of the Yadkin River Greenway Council’s efforts to keep the trails and corridors maintained while growing and moving forward.

First we would like to say thank you to Ginger and Harvey Barlow for their longtime support of the greenway’s Adopt-A-Trail program. They maintained a landscaped section near the dental office for fifteen years. They decided to retire this year. We are very grateful and appreciative for their many years of service.

Dr. Craig Bennett, one of our council members and fairly new member to our Adopt-A-Trail program, along with a newly formed group of young boys called “The Trail Life Boys” led by Dr. Chris Roberts worked this fall to police and collect brush and fallen limbs along the Mulberry Field section, the Jefferson Turnpike Corridors, River’s Edge Trails and Smoot Park to Memorial Parks extension. Dr. Bennett, also recently replaced doggie bags, painted bollards and spread many loads of mulch on landscaped areas along Mulberry Fields and Smoot to Memorial Parks sections.

Tyson, Inc. employees under the leadership of Jim Brown always do an excellent job grooming and maintaining the landscaped section near the Tyson Trailhead and the area near Pardue crossing.

Diane Stephens, Lanny Stephens and Fay Kennedy members of The Master Gardeners frequently check the landscaped space near the Reddies River Trailhead for maintenance needs. Most recently the group in coordination with the North Wilkesboro maintenance crew trimmed large grasses to assure better growth this Spring. Thank you, for your attendance in maintaining this beautiful section of the greenway.

Dan Day cares for and preserved a space around a tree and plaque near the confluence of the Reddies and Yadkin Rivers in memory of his mother, Pat McNeil Day.

Sonny Church, for many years has maintained a landscaped area on the greenway at the confluence of the rivers that was created and dedicated in memory of his mother and father, Rachel and Vernon Church.

Keith Howell, father of Eagle Scout William Howell, continues to groom a flower bed and landscaped space along the Jefferson Turnpike Trail.

Bill Clifton agreed to frequent certain sections of the Yadkin River Greenway Trail and report the areas where maintenance is needed.

Craig Langston will work and help to maintain the space around the blueberry bushes at the confluence of the Yadkin and Reddies Rivers.

(Volunteers continued from page 4)

Lynn and William Clark, two of our most devoted and faithful Adopt-A-Trail members, are frequently cleaning up the trash along the greenway trails while exercising and walking their dog. Their caring and passion helps to assure that our greenways are safe, pleasant and enjoyable for all our users.

Jule Hubbard maintains the canoe access facility on the Mulberry section near Pardue Crossing. The access steps were constructed by his son, Miles, as an Eagle Scout Project.

We are thankful and blessed for the many hours and donations from people and groups in our community. The Wilkes District Boy Scout Eagles projects continue to be a resource for volunteers who keep the greenway a wonderful place for recreation and educational purposes.

A 100 foot donor and volunteer recognition wall was built and dedicated in 2003 which honors the many volunteers, that have contributed \$1,500.00 or more.



Two of our Greenway volunteers, William and Lynn Clark, are shown above in the photo picking up trash on the Greenway at the Reddies River Trailhead retaining wall. Thanks to all who pitch in to help beautify the Greenway!

You Can Help Beautify the Greenway Become a Greenway Volunteer!!!

If you're interested in the Adopt-A-Trail program or volunteering for any project on the greenway, please contact Freida Matthews, Chairperson Community Volunteer Coordination Committee.

Phone contact number is: 336-838-4938

The Scouts earning the Eagle Scout Award include:

- ◆ Bradley Vickers – 4 tables and a bench at the confluence of the rivers
- ◆ Britt Burkhart – 37 birdhouses on three different trails – Smoot to Memorial, Reddies River, the Rivers Edge
- ◆ Daniel Shinaman – 7 duck boxes – Smoot to Memorial Parks and the Turnpike Trails
- ◆ Ethan Swofford – observation deck – Smoot to Memorial Parks Trail.
- ◆ Nathan Eggers – observation deck – Reddies River Trail
- ◆ Peter Gray – fishing access – Reddies River Trail
- ◆ William Howell – Landscaping and Bench Turnpike Trail.
- ◆ Charles Reese of Troop 335 – Building and installing five bat houses along the Reddies River and Smoot to Memorial Park Trails.

In 2018 tornadoes, hurricanes and heavy rains severely damaged the greenway. High winds, downed trees and flooding caused erosion along the river banks. Mud and sand covered several greenway sections.

Thanks to the quick response of the maintenance crews from the towns of Wilkesboro and North Wilkesboro and the Wilkes County Parks and Recreation Department, the greenway sections were repaired in a timely manner.

We thank the maintenance crews for their many hours of extra work in support of the Greenway. We also appreciate their staying in tune to the continuing maintenance needs of the greenway.

Freida Matthews

Yadkin River Greenway Council Endowment Fund has been established!

While discussing estate planning and how much inheritance to leave his heirs, a wise old sage once quipped “If they can’t make it on 95 percent, then they certainly can’t make it on 100!”

With that in mind, in 2018 the Greenway Council undertook the goal of establishing a long term gifting program that many *Friends of the Greenway* have expressed an interest in over the years.

The Council has partnered with the Wilkes Community Foundation (WCF) to establish an endowment that will be administered by local members of the foundation once the Council’s work is done and the greenway has been completed. Briefly, the WCF is a part of the North Carolina Community Foundation and the funds that accrue over the years will be disbursed on an established percentage basis when the needs arise.

Below is an excerpt from the endowment documentation that describes how it’s designed to operate:

Purposes. *The Agency Endowment shall be devoted to the support of the Yadkin River Greenway Council, Inc. and its use shall be restricted as follows: for the expansion, construction and preservation of the Yadkin River Greenway.*

Should the Yadkin River Greenway Council, Inc. cease to exist, Donor recommends that this Endowment become a Non-Donor-Advised Field of Interest Endowment devoted to the expansion, construction and preservation of the Yadkin River Greenway, as advised by the Wilkes County Community Foundation, an advisory board of the Foundation with preference given to the County of Wilkes, North Carolina, the town of Wilkesboro, NC, and the town of North Wilkesboro, NC.

Should the time come when this charitable use, in the sole judgment of the Foundation's Board of Directors, has become unnecessary, undesirable, impracticable, incapable of fulfillment, or inconsistent with the charitable needs of the community served by the Foundation, the Agency Endowment shall be redirected to the most similar cause as can be determined by the Foundation's Board of Directors.

If a donation to the Yadkin River Greenway Council Endowment interests you, you may find the following helpful in your planning process.

PLANNED GIVING

You can direct charitable giving through your estate plan to the Yadkin River Greenway Endowment Administrator, The Wilkes County Community Foundation. We can help you realize your goals, achieve tax advantages and leave a growing legacy for generations to come. This is philanthropy that is amazingly accessible and will have a major, lasting impact on your community.

Several options are available for planned gifts to be directed to the Yadkin River Greenway Council Endowment. Planned gifts can provide important tax savings and other benefits while allowing an individual to leave a permanent, growing legacy. Giving options vary, depending on whether one wants to give now or in the future. These can include:

Bequest: Naming the Yadkin River Greenway Council Endowment in a will or trust is a popular way to support the greenway. A charitable bequest can be made to add to an existing fund and one can designate a specific amount, a percentage of an estate or what remains after other bequests are fulfilled. Benefits can include significant estate tax savings. They are easy and revocable if circumstances change.

Retained life estate: Real Estate can be deeded to charity, allowing one to save taxes now with a current deduction and enjoy the property for the rest of one’s life. Through our managing partner, the North Carolina Community Foundation we can help transform a property’s value into a legacy to benefit the community and meet charitable intents, while allowing the realization of financial and tax benefits. Proceeds from the eventual sale of the real estate will help leave a legacy and carry out one’s charitable intentions.

Life insurance: If one’s need for life insurance has decreased, transforming a policy into a gift can help meet philanthropic goals and realize income tax savings, estate tax advantages and extend ones charitable reach with a low annual cost. Transferring ownership of a cash value policy to the Yadkin River Greenway Endowment may allow one to receive a tax deduction based on its current value.

Retirement plans: If you find that the assets that have been set aside for retirement in an IRA or other qualified plan exceed one’s needs, then the election to name the Yadkin River Greenway Council Endowment as the beneficiary may be an option. Retirement assets can be the ideal way to meet philanthropic goals because they’re heavily taxed if left to heirs, but tax-free if designated for charity.

Interested donors may contact Megan Lynch Ellis, Regional Director of Development North Carolina Community Foundation, at mellis@nccommunityfoundation.org or 828-355-4306. Attorneys may contact Mary Morgan, Philanthropy Counsel, at mmorgan@nccommunityfoundation.org or 919-256-6909. Or, contact the Yadkin River Greenway for additional information.

To make an estate gift: Give to your attorney the following language to insert into your will: “I give, devise and bequeath to the North Carolina Community Foundation, Inc., a qualified 501-c-3 charitable organization, ___% of my residual estate [or a specific \$ amount] to be directed to The Yadkin River Greenway Council Endowment Fund.”

The NCCF is the single statewide community foundation serving North Carolina and has made \$145 million in grants since its inception in 1988. With more than \$270 million in assets, NCCF sustains 1,300 endowments established to provide long-term support of a broad range of community needs, nonprofit organizations, institutions and scholarships.

Fundraisers and Annual Contributions Help Grow the Greenway

In just 18 years, the Yadkin River Greenway has gone from blueprints to footprints on miles of greenway. 8.2 miles of Greenway provide easy access to the beauty of the land along the rivers that flow through the center of our community and connect our parks and neighborhoods. Today we have new sections in the construction and planning phases.

Our community is fortunate to have many local citizens whose generosity helped build the extensive greenway system we have today. Local contributions not only pay for construction costs, they also help us win grants! Significant public support is a major requirement of the grant application process. Over half the money raised to build our current Greenway system has come from grant sources outside our community. Over half the money spent, to date, on Yadkin River Greenway construction has come from grants.

Your contributions to the Greenway organization helps pay for this function, which has enabled us to more than double the amount of new construction projects the Council has been able to fund and construct.

Your donation keeps our greenway system growing. You can choose one of three ways to direct your contributions.

1. You can specify 100% of your contribution is to be spent on construction of new Greenway segments.
2. You can give an unrestricted contribution to the Greenway that enables us to plan new sections and to find and secure grants to pay for new construction. Become a member of the Friends of the Greenway with your annual gifts, or send us a contribution. Any funds received in excess of our operations expenses can be used for construction.
3. You can support Greenway fundraisers that help fund the administration and operations of the Greenway organization. Our fundraisers include:
 - The Turtle Regatta Drop Dunk and Draw Event is held in October at the Mulberry Fields Trailhead. Although the turtles once raced down the Reddies River, the new event format is safer, is not dependent on the water levels of the Reddies River to run the event. Become a Turtle Regatta sponsor, by “adopting” a turtle for \$5. The first turtles drawn from the holding tank, are awarded various prizes. The Turtle Regatta is scheduled for during this year’s Trail of Treats day along the Yadkin River Greenway. Stay tuned for the details!
 - The Greenway Benefit Golf Tournament is held annually at Oakwoods Country Club. Sign up for a fun round of golf or be an event sponsor. The Golf Tournament will be held this year on June 27th just after noon.
 - Bluebox Box Program - You can sponsor a Blue Bird Box for \$100.00 which will be placed on the greenway.
 - All event sponsors are recognized at the event and in news releases in our community! Thanks to all who donate, volunteer and work to help grow our Greenway system!!! *The Yadkin River Greenway Council is a 501(c)3 charitable organization and donations are tax deductible.*



Regatta Turtle Dump!!!



Drawing the Winner!!!



Thanks to our sponsors!!!



**2018 Golf Tournament Participants
At Oakwoods Country Club**

Our Friends, Contributors And Sponsors

Members of Friends of the Yadkin River Greenway

(A-C) Jim and Rose Andrews, Wayne and Zedena Barker, Harvey and Ginger Barlow, Leo and Ila Baugham, Wayne and Zedena Barker, Bob & Carol Black, Gary D. Blevins, Bill and Sharon Benson, Carolyn Brookshire Pardue, Mike and Dianna Bullock, Karen and Harold Bumgarner, Edwin Canter, Phil and Cecilia Carlson, Carson Foundation, Kin and Vicki Church, William and Lynn Clark, Bill and Karen Clifton, Anne Clifton, Sonny and Piper Church, Mrs. George Collins, Howard and Brenda Colvard, Rick and Trish Cook, Cubic Inc., Ed and Ramona Curtis

(D-K) Lois Ann Doss, Stan and Susan Dudek, Allen and Audrey Dyer, Ginger Edmiston and Bobby Johnson, Camille Eller, Claudia Eller Tolbey, Mike Eller, Kim and Claude Faw, Chuck Forester, Rayanne Francis, Martha Glass, Russell and Loraine Golds, Ruth Graham, Fred and Jean Graf, Ted and Jacquelyn Hall, Bill and Ruth Harris, Vaughn and Francis Hayes, Lee Herring, Leonard G. Herring Family Foundation, Mr. and Mrs. James R. Hicks III, James M. Huffman, Rebecca Hubbard, Alison Huskey, Scott Jeesee and Laura Yaines, Gary and Madelene Johnson, Keith and Amanda Johnston, Patsy Jones, Petro Kulynych Family Foundation I, Petro Kulynych Family Foundation II

(L-P) Arnold and Becky Lakey, Gerald and Linda Lankford, Dean and Susan Ledbetter, Pete and Wilma Lovette, Carroll Lowe, Pete Mann, Richard and Dot Marlow, John and Freida Matthews, Pam and Drew Mayberry, Carl McCann, David and Connie McNeil, Mike and Donna McNeil, Brenda B. Moore, Tim Murphy, Martha Nichols, Sandra and John Oliver, Lisa Pardee, Marilyn Payne, Carolyn Frazier-Pardue, Ned and Betty Pierce

(R-Z) Nancy Rickets, Bill and Hedy Ryerson, Chuck and Belinda Smithy, Gordon Smoak, Jim and Luci Smoak, Mary Spears, Larry and Diane Stone, Stone Foundation, Steve and Kay Steele, Laura Stroud, Sam Stroud, Tina Taracido, FW and Martha Townes, Jim Sturdivant, David Wiles, Charlie and Mary White, Graham Wyche, Fran and Tim York, Randall Zirkle

Walker Level Members (\$100 to \$499) Fern Absher, Harvey and Ginger Barlow, Kin and Vicki Church, William and Lynn Clark, Bill and Karen Clifton, Mrs. George B. Collins, Rick and Trish Cook, Cubic Incorporated, Allen and Audrey Dyer, Ginger Edmiston and Bobby Johnson, Camille Eller, Kim and Claude Faw, Caroline Brookshire Pardue, Chuck Forester, Russell and Lorraine Golds, Jacquelyn and Ted Hall, Bill and Ruth Harris, Vaughn and Frances Hayes, James Huffman, Gary and Madeline Johnson, Patsy Jones, Keith and Amanda Johnston, Arnold and Becky Lakey, Dr. Henry C. Landon, Pam and Drew Mayberry, David and Connie McNeil, Martha Nichols, Lisa Pardee, Ned and Betty Pierce, Chuck and Belinda Smithy, Jim and Luci Smoak, Daine and Lanny Stephens, Stone Foundation, Alvin and Shirley Sturdivant, William Watts, Charlie and Mary White

Hiker Level Members (\$500 to \$1499) Phil and Cecilia Carlson, Leonard G. Herring Family Foundation, James Huffman, Mike and Donna McNeil, Steve and Kay Steele, Laura Stroud, and Graham Wyche

Recognition Wall Donors

Jogger (\$1,500 to \$2,999) total contributions: John & Fran Bond, Margaret & Thomas McMahan, Brenda & Carl Page, Jack Anderson, Kimberly & Brian Peace, Betty & Clarence Benton, Wilkes Journal-Patriot, Vicki & Bob Taylor, Ed Greene,

(Jogger Level Continued)

Mary Iva & Jim Gray, Wilkesboro Down Town Merchants, Dariel Rathmell, Joe and Luanne Love, Mary & Bill Marlow, Betty Reinhardt, Stephen J. Wessels, Dot & Richard Marlow, Donna and Mike McNeil, The North Wilkesboro Rotary Club, Wilma and Pete Lovette, Beverly & Gaither Keener, Martha, Charlotte, William & "B" Towns, Northwestern Bank, Kiwanis Club of North Wilkesboro, Frances & Bill Casey, Blue Ridge Engineering, Mary Lee Culler, Kim and Claude Faw, Mark and Patricia Pegram, Ed & Patricia Sturdivant, Dr. & Mrs. John Bennett, Dr. & Mrs. Brad Shinaman, Autumn Nichols, Vicki & John Barker, Michelle & John Pontzer, Dr. David Sargent & Dr. Barry Ellis, Charlie & Mary White, Paul & Joyce Anderson, Meadows Mills, Inc., June & Bob Hege, David & Lisa Factor, Dr. Joseph H. Johnson, Patricia W. Johnson, Wanda & David Henson, Steve & Ann Palmer, Ned and Betty Pierce, Carol Stone, ECMD, Inc., Women's Service League of Wilkes, Wilkes Community Foundation, Kodak, Mildred R. Turner, Vicki & Jeff Gray, Dr. Joseph H. Johnson & Patricia Johnson, Claude and Kim Faw and Bill and Ruth Harris.

Pathfinder (\$3,000 to \$4,999) total contributions: Hall Petroleum Co., Inc., Heather & Tim Murphy, Lisa & Perry Jennings, Karolen & Tom Bowman, Camille Lovette Eller, First Union Bank, John E. Gyag, Ken and Laura Welborn, Cooks Inc., Pat McNeill Day, Pete Mann, Connie & David McNeill, Anne Pardue, Nancy & Bob Ricketts, Mr. & Mrs. C.O. Lovette, Mr. & Mrs. Ralph Wooten, Ray Stroud, RMC Metromont Materials, Kim & Jug Shumate, Ina Parker, Kathy & Craig Bennett, Duncan Electric Corporation, Dr. & Mrs. Kenneth Curl, William M. Duncan, Sr., Abby, Andrew, Jan & Dennis Huggins, Mary & Ed Spears, Advantage West-North Carolina, Gardner Glass Products, Greg Stikeleather.

Explorer (\$5,000 to \$9,999) total contributions: Randell K. Hayes, Shirley and Alvin Sturdivant, Reins-Sturdivant Funeral Home, First Citizens Bank, Freida and John Matthews, Mark and Teresa Church, Frances and Vaughn Hayes, Vulcan Materials, BBT, Luci and Jim Smoak, In Honor of Rose S. Andrews, Yadkin Valley Bank, Bruce and Vicki Church, Lena R. Lovette, Duke Energy Company, Overmountain Victory National Historic Trail, National Park Service, Kay & Steve Steele, Wilkes Community Foundation, American Drew and La-Z-Boy Co. Wachovia Foundation, Carolyn and Billy Bare, Kin and Vicki Church, Carolina Realty, Inc. Joyce and Nick Cirillo, Chuck Forrester

Trailblazers \$10,000 and up total contributions: Carson Foundation, Jane & David Kim, Rusty & Duane Smith, Becky & Arnold Lakey, Pam & Lee Herring, Judy & JC Faw, Children of Rachel N. & Vernon S. Church, Larry & Diane Stone, Wilkesboro TDA, Lanny & Diane Stephens, The Jim Shumate Family, Rose & Leonard Herring, Tyson Foods, Thomas Frazier, MD., Keith & Amanda Johnston, Lorene & Robert Joines, Sandy, Matthew & Jim Faw, Petro Kulynych Family Foundation, I and II, Cubic Inc., Willis Hoyl Bryant, Debbie & "Mule" Ferguson, NC DENR, Tammy & Cam Finley, Friends of Bran Goad, NC Department of Transportation, Z. Smith Reynolds Foundation, Lowes's Charitable and Educational Foundation, Dwight & Anne Pardue, Brushy Mountain Water Co., Gwyn F. "Duck" Vannoy

How to Attain Recognition Wall Status

Once you become a Friend of the Greenway, your contributions are continually tabulated. As you make additional contributions, you will progress through the donation membership levels. Once your combined contributions reach \$1,500, your contributions will be recognized as a "Jogger" and your name will be engraved on a bronze plate and placed on the recognition wall!

See the Sponsorship and Friends Levels on the Back of this newsletter!!

If you have questions about becoming a Friend of the Greenway, call our office at: 336-651-8967 or visit our web page at:

www.yadkinrivergreenway.com

PHOTOS OF THE GREENWAY!!! COURTESY OF LYNN CLARK

These outstanding photographs were taken by William and Lynn Clark. For more of their photos, check out our Facebook page!! On the greenway, a surprise awaits you. Get out and enjoy the scenic Yadkin River Greenway.



A quiet morning along the Greenway



Morning sunbeams



A walk in winter



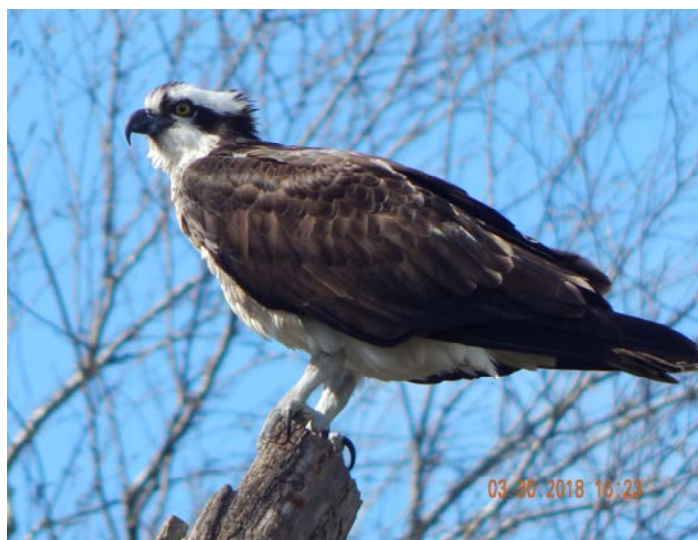
Snack time!!!

PHOTOS OF THE GREENWAY!!! COURTESY OF BETTY OWENS

These outstanding photographs were taken by Betty Owens. For more of Betty's photos, be sure to check out our Facebook page!! We encourage you to take photos and share them with the Greenway.



Mallards and Geese enjoying the sun!!!



Osprey



Barn Swallow



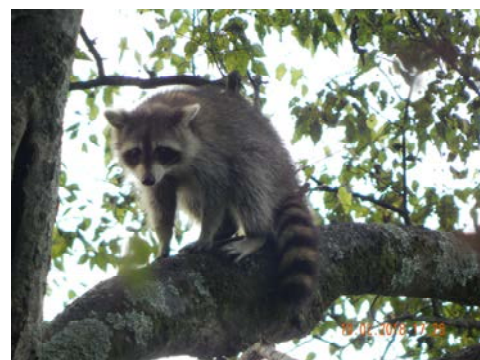
Eastern Bluebird



Cormorant

From birds and mammals to reptiles and amphibians, the Yadkin River Greenway is teeming with wildlife, stunning scenery and new discoveries! Come out and enjoy the Yadkin River Greenway!!!

Don't forget to bring your camera or camera phone!!



Raccoon

**The Yadkin River Greenway
Council Newsletter**

Yadkin River Greenway Council
P. O. Box 191
North Wilkesboro, NC 28659

Phone: 336-651-8967
Email: yrgreenway@pcshome.net



Become A Friend Of The Greenway!

The **Friends of the Greenway** campaign has completed another year as a “grass roots” support organization. Friends of the Greenway added 16 new members during 2018 for a grand total of 297 past or present members! Of these, many members renewed their membership during the past year. We hope all will renew during 2019!

Friends of the Greenway contributions, over the past 16 years, now total \$181,893.00! These donations go a long way towards covering the administration expenses of the Yadkin River Greenway Council. This enables the Council to fulfill its mission of developing a greenway system in our community. Annual membership is open to all. And, since the Council is a 501(C)3 non-profit organization, membership dues are usually tax deductible.

We offer opportunities to our members to volunteer time on specific greenway events and projects, helping in the greenway office, and contacting prospective new members. This newsletter and other communications will, hopefully, keep our members informed of Greenway activities.

Each January, or based on membership anniversary date, we will begin contacting each Friend of the Greenway to consider the renewal of their membership and to continue their support of the greenway. Regular memberships are: \$20 for individuals, \$40 for families, \$12 for youth, \$100 for businesses, and \$50 for civic organizations.

Also, if you would like to be recognized as a **Friend of the Greenway**, the donation categories are:

Walker: \$100
Hiker: \$250 to \$500
Jogger: \$1,500 to \$2,999
Pathfinder: \$3,000 to \$4,999
Explorer: \$5,000 to \$9,000
Trailblazer: \$10,000 and up

Once you become a Friend of the Greenway, your contributions are constantly tabulated. As you make additional contributions, you will progress through the donation ranks of membership levels mentioned above. Once you ultimately reach the combined contribution level of \$1,500, your contributions will be recognized as a **Jogger** and a bronze recognition name plate will be installed on the Greenways Recognition Wall for all to see!

Thanks again for your continuing support! If you have any questions, please call the Greenway office at: 336-651-896.

RG Absher, Executive Director

www.yadkinrivergreenway.com
