

The Greenway News



The Yadkin River Greenway Council Newsletter

The Greenway... To Build And Preserve

2020 THE YEAR IN REVIEW INSIDE THIS ISSUE:

Blue Bird Nesting Box 2

Sidewalk Expansion/New
Decking Installed 3

Paving Completed at Red/
Green Connector to WCC 4

Privacy Fencing Installed 5

Flooding on Greenway 6

Erosion Repairs 7

NC DOT Pedestrian and Bike
Counter on the Greenway 8

Cleanup Wilkes Helps Keep
the Greenway Clean 9

Fundraising and Events 10

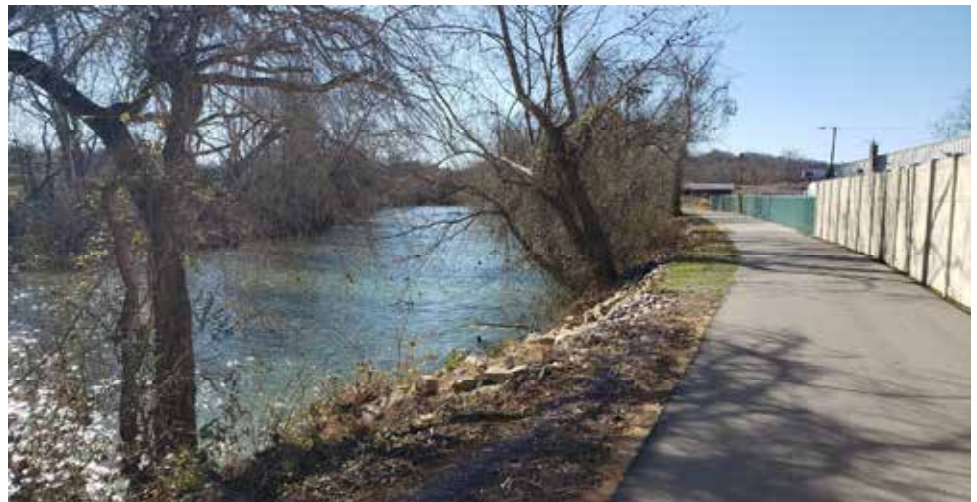
Be A Volunteer 11

Photos by Betty Owens 12

Photos by Lynn Clark 13

Kayaking the Yadkin 14

Friends and Contributors 15



A Message from the President

For most of us, 2020 was “the year that never was!” However, I am pleased to report that even with the challenges presented by the Covid pandemic, the Greenway Council made productive strides in greenway expansion.

We were able to complete several construction projects during the year along with putting the finishing paving touches on both the Red/Green Connector and Wilkes Community College greenway sections.

Record flooding events caused significant erosion problems along all sections of the greenway. We appreciate the towns and county maintenance crews for taking steps to remediate those issues in a timely manner!

Thanks to the continued financial support of the Friends of the Greenway and the community at large, 2020 was yet another significant year for greenway fund raising. In addition, funding by various corporate and governmental entities allowed the greenway to continue to operate and help meet the physical fitness needs of Wilkes Countians. And, for many, help keep their sanity by providing an escape to the great outdoors!

The Council continues to thank our partners in interest, the towns of Wilkesboro, North Wilkesboro and Wilkes County. They continue to do the heavy lifting on day to day greenway maintenance and sustain its growth and development. We thank them for their continued support and protection of this valuable asset.

As always, I look forward to seeing *YOU* on the greenway! Charlie White

Sponsor a Bluebird Box Project Helps Bluebirds



If you've been on the greenway lately, you've probably noticed some of our newly painted and very colorful, Bluebird boxes! The *Sponsor A Bluebird Box* project is the brainchild of Fundraising Chairman, Graham Wyche. The project is part of an effort to restore the habitat of one of America's favorite backyard species, the Eastern Bluebird!

Graham, along with other volunteers, design, paint and install the boxes along the greenway. No two boxes are alike!

Each box has the name of the sponsor and is available for adoption on a yearly basis. Annual adoption sponsorship is \$100. Over 30 boxes have been installed to date. Spotting them is easy as you enjoy your walk along the greenway.

Plans are to develop a more comprehensive monitoring program that surveys: bird counts, egg counts, fledging success, etc.

If you would like to become a Bluebird box sponsor, contact the greenway office at 336-651-8967 or by emailing: yrgreenway@pcshome.net

Get Your Personalized Greenway Print

Local artist William "Bill" Nichols has produced a rendition of a Bluebird box along the greenway. Bill has extended an invitation to customize your print and add an image of you, your family members, you and your favorite pet...or almost anything you desire!

You can purchase the print by contacting the greenway office at: 336-651-8967

Custom work can be arranged by contacting Bill at: 336-903-9344



Original artist rendition is shown left.

An example of print with customized features is shown on right.



Wilkesboro Avenue to Red/Green Connector Sidewalk Construction



During 2020, The Greenway Council and the Town of North Wilkesboro improved access to the Yadkin River Greenway by constructing a new sidewalk from Wilkesboro Avenue (near the ABC Store) to the Red/Green Connector bridge.



Decking Replaced at Brushy Mountain Dental Clinic



The Council, in partnership with the Town of North Wilkesboro and Brushy Mountain Dental Clinic, improved access to the Yadkin River Greenway by resurfacing the ramp approaches and deck area at the dental office formerly known as the Coffee Tavern. The deck is adjacent to the West Park Medical facility in North Wilkesboro.

Red/Green Connection Paving Completed



The most significant greenway construction event for 2020 was paving of the Red/Green Connector and the Wilkes Community College segments.

Moravian Creek To Wilkes Community College Paving Completed



With the completion of paving of the Yadkin River Greenway to Wilkes Community College, you can now walk or ride your bicycle from the Wilkes Family YMCA at Rivers Edge Park to Wilkes Community College without crossing Highway 268.

This completed section can provide MerleFest fans a safer and more convenient access to MerleFest.



The photo shows the greenway tie in to the existing WCC trail system.

Privacy Fencing Installed On Memorial Park To Mulberry Fields Connector



Fencing under construction along the Red/Green Connector section.



Privacy fencing allows local businesses and greenway users to be in close proximity while providing security and esthetic enhancements to the greenway.

Historic Flooding In The Fall Of 2020 Impacted The Greenway



Two major flooding events during the fall of 2020 greatly impacted the greenway causing extensive damage. The above image was taken from the Pardue Crossing Bridge eastward towards the Reddies River.



Flooding created a unique view of Wilkes Regional Medical Center



This drone aerial photo shows the extent of the flooding at the Wilkesboro Avenue bridge and the confluence of the Reddies and Yadkin River.

The Red/Green greenway connector is shown in yellow.

Flood Erosion Damage Was Repaired By North Wilkesboro



Repairs to erosion damage by North Wilkesboro Maintenance Crews



Streambank erosion slippage.



Grading and installation of rip-rap was needed to repair and stabilize the edge of the streambank next to the Yadkin River Greenway. Streambank “after” repairs are shown above.

NC DOT Bicycle and Pedestrian Counter in use on the Greenway

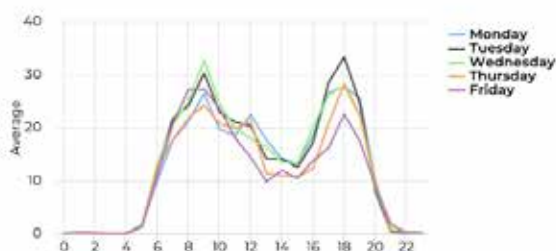
WLK_YDK

January 1, 2020 → October 30, 2020

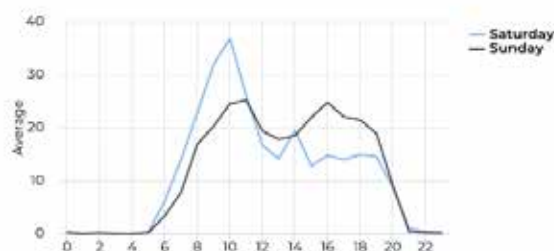
Annual Comparison - Pedestrians



Hourly Profile - Pedestrians



Hourly Profile - Pedestrians



www.eco-compteur.com

Yadkin River Greenway

4

The NCDOT bike and pedestrian counter (which was installed in 2016 and is located at the confluence of the Reddies and Yadkin Rivers) continues to provide the Council with valuable data regarding the use of the greenway. The data includes daily, weekly and monthly traffic counts, direction of travel and time of day/peak traffic statistics, to name a few. An example of the data is shown above.



The bike and pedestrian counter tallied an estimated 120 thousand bike and pedestrian “hits” at this one location, during 2020!

Cleanup Wilkes Helps Keep the Greenway Clean

When you're out and about exploring the sights along the greenway and in the two towns that it connects...you will invariably come across places that, unfortunately, contain trash and litter.

Trash and litter is a problem that despoils the beauty of the Yadkin River Greenway and detracts from its enjoyment! Trash can be a health and safety hazard as it may contain sharp objects or hazardous materials and chemicals which can leak into the environment. These chemicals can wind up in the rivers and harm fish and pollute our drinking water.



The greenway needs volunteers to help keep the greenway clean!

Discarded plastic bags and plastic six pack container ties can trap or suffocate fish and wildlife. NC Wildlife Commission Officers have mentioned that fishing spots along the river are problem areas for trash. Often found at fishing sites are old foam coolers, discarded lunch liter, fishing line, fishing tackle and bait boxes. It is illegal to litter along our streams in North Carolina and violators are subject to fines when caught.

Another type of trash is from floodwater deposits from upstream locations. This type of trash includes old tires, used appliances, car parts and even household trash and discarded drug and pill boxes. The bottom line all this trash is bad for the river and bad for the greenway!

Fortunately, Wilkes has volunteers who have chosen to do something about the litter problem! A group called **Cleanup Wilkes** has started holding periodic trash cleanup events on the greenway, along roadsides and other locations around the County. **Cleanup Wilkes** organizers state that they can always use more volunteers! If you are interested in assisting their cleanup efforts, please visit their FaceBook Page - **Cleanup Wilkes!**

Also, if you know of a site along the Yadkin River Greenway that has a litter problem, please contact the Yadkin River Greenway Office at 336-651-8967 or email at yrgreenway@pcshome.net. Let's all do what we can to keep the greenway clean!



Thanks to all who work to keep Wilkes and the Yadkin River Greenway Clean!!!

Fundraisers and Annual Contributions Help The Greenway Grow!

In just 20 years, the Yadkin River Greenway has gone from blueprints to footprints to approximately 9 miles of greenway. The Greenway provides easy access to the beauty of the land along the rivers that flow through the center of our community and connect our parks and neighborhoods. Today we have new sections in the construction and planning phases.

Our community is fortunate to have many local citizens whose generosity helped build the extensive greenway system we have today. Local contributions not only pay for construction costs, they also help us win grants! Significant public support is a major requirement of the grant application process. Over half the money raised to build our current greenway system has come from grant sources outside our community. Over half the money spent, to date, on Yadkin River Greenway construction has come from grants.

Your contributions to the greenway organization helps pay for this function, which has enabled us to more than double the amount of new construction projects the council has been able to fund and construct.

Your donation keeps our greenway system growing. You can choose one of three ways to direct your contributions.

1. You can specify 100% of your contribution is to be spent on construction of new greenway segments.
 2. You can give an unrestricted contribution to the greenway that enables us to plan new sections and to find and secure grants to pay for new construction. Become a member of the Friends of the Greenway with your annual gifts, or send us a contribution. Any funds received in excess of our operations expenses can be used for construction.
 3. You can support Greenway fundraisers that help fund the administration and operations of the greenway organization. Our fundraisers were cancelled in 2020 due to COVID 19 but are back on track to be held in 2021 and include:
 - The Turtle Regatta is held in October. Become a Turtle Regatta sponsor, by “adopting” a turtle for \$5. The Turtle Regatta is scheduled for October 21st to be held in Cub Creek Park. Stay tune for the details!
 - The Greenway Benefit Golf Tournament is held annually at Oakwoods Country Club. The Golf Tournament for 2021 will take place at Oakwoods Country Club on June 24th.
 - Bluebird Box Program —You can sponsor a Bluebird Box for \$100.00 which will be placed on the greenway.
- All event sponsors are recognized at the event and in news releases in our community!

Thanks to all who donate, volunteer and work to help grow our greenway system!!! *The Yadkin River Greenway Council is a 501(c)3 charitable organization and donations are tax deductible.*



Regatta Turtle Dump!!!



Drawing the Winner!!!



2019 Golf Tournament Participants At Oakwoods Country Club

**For more information on our fundraisers,
Contact the Greenway office at 336-651-8967**

Be Active Be Adventurous – Be A Volunteer!

The future belongs to those who believe in the beauty of their dreams - Eleanor Roosevelt

It has been confirmed and well known among our Yadkin River Greenway Council members the importance of our volunteers. Now more than ever, even with a long year of being overwhelmed by a Covid-19 pandemic, with shut downs, uncertainties of the future and weather related flooding along the greenway trails, our volunteers are anxious, excited and ready to work their established areas.

With our community health providers encouraging and realizing the importance of being active to improve our health, we are seeing more of our citizens venturing out on the greenway.

How many of us realized that during these difficult times of lockdowns and quarantines the greenway trails are the one place that has given us freedom and stability to get outside and exercise and breath the fresh air our body's desperately need.

Greenways are public parks where families can spend time together and where parents can pass their knowledge of wildlife on to their children. We know that by maintaining and preserving the spaces and land around our trails we are helping to save the land and rivers that provide critical habitat for wildlife we all love to observe and enjoy. Thanks to our volunteers and maintenance crews who are always ready and willing to work together in keeping the greenway trails, landscaped spaces and corridor beautiful and well preserved. The Wilkes Parks and Recreation Department under the leadership of Terry Church and the North Wilkesboro Maintenance Department led by Mike Shew, continue to spend many hours mowing, doing weed control, removing fallen trees and limbs and delivering mulch to our volunteers designated areas. Because of heavy rains that cause flooding along the trails and corridors, the maintenance crews also delivered and dumped loads of large rocks along the rivers edges to help secure the banks and prevent erosion.

There are not enough words to express our appreciation to those volunteers who through many, many years have continued to devote many hours to this cause. We are blessed and fortunate to have these volunteers who care about the appearance of our trails and work hard to keep landscaped areas around our trails neat and groomed. These volunteers have played an extremely and essential role in getting us where we are today.

- ◆ Tyson, Inc. employees under the leadership of Jim Brown do an excellent job grooming and maintaining the landscape section near the Tyson Trailhead and the space below Pardue Crossing.
- ◆ Sonny Church, for many years, has maintained a landscaped area at the confluence of the rivers that was created and dedicated in the memory of his mother and father, Rachel and Vernon Church.
- ◆ Dan Day and family care for and preserved a space around a tree and plaque near the confluence of the Yadkin Rivers which was installed there in memory of his mother, Pat McNeil Day.
- ◆ The Master Gardeners, under the leadership of Diane Stephens, Fay Kennedy and Ellie Synder, Wilkes County Extension Agent, frequently check the beautiful section near the Reddies River Trailhead for maintenance needs. Most recently the groups in coordination with the Town of North Wilkesboro Maintenance Crews trimmed large grasses and mulched to assure better growth this Spring.
- ◆ The Health Foundation volunteered their mowing crew to maintain the section around the Yadkin River Greenway Recognition Wall.
- ◆ Keith Howell, father of Eagle Scout William Howell, continues to groom a beautiful flower bed and landscaped space along the Jefferson Turnpike Trail.
- ◆ As always, a special thanks to William and Lynn Clark who routinely clean up trash along the greenway trail as they do their daily walks.
- ◆ Ellie Synder, Wilkes Extension Agent, Freida Matthews and Charlie White work together by checking on and helping maintain the Blueberry bushes.
- ◆ Betty Owens and Lynn Clark are to be commended for their time and efforts in taking outstanding and beautiful wildlife pictures along the greenway trails and sharing them on our Facebook page and our yearly newsletter.
- ◆ Dr. Craig Bennett continues to volunteer his time in restocking doggie potty bag dispensers. He has also volunteered to paint bollards at the greenway trailheads.
- ◆ Jule Hubbard maintains the canoe access facility on the Mulberry Fields Section near Pardue Crossing. The access steps were constructed by his son Miles, as an Eagle Scout project.
- ◆ Bill Clifton agreed to frequent certain sections of the greenway trails and report the areas where maintenance is needed.

We are forever grateful for our volunteers who continue to support and help in this important work in keeping our community healthy and safe. Our Yadkin River Greenway belongs to you. It is yours to enjoy and to ensure it stays beautiful for generations to come. "Be a Volunteer." We need you in order to continue this journey.

We Look forward to crossing paths with you on one of our greenway visits.

Freida Matthews, Volunteer Coordinator



Tyson employees work on landscaping along the greenway.



William (left) and Lynn (right) Clark landscaping on the greenway.



Photos of the Greenway!!! Courtesy of Betty Owens

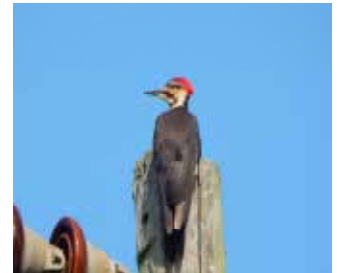
These outstanding photographs were taken by Betty Owens. For more of Betty's photos, be sure and check out our Facebook page!! We encourage you to take photos and share them with the greenway. You can email them to: yrgreenway@pcshome.net and we look forward to seeing and sharing them!!



Cormorant



Racoon



Pileated Woodpecker



Vulture



Cardinal



Groundhog



Robin

From birds and mammals to reptiles and amphibians, the Yadkin River Greenway is teeming with wildlife, stunning scenery and new discoveries! Come out and enjoy the Yadkin River Greenway!!!

Don't forget to bring either your camera or camera phone!!



White Tailed Deer

Photos of the Greenway!!! Courtesy of Lynn Clark

These outstanding photographs were taken by William and Lynn Clark. For more of their photos, check out our Facebook page!! On the greenway, a surprise awaits you! Get out and enjoy the scenic Yadkin River Greenway!



Reddies River Downstream of Dam



Reddies River Upstream of Dam



Great Blue Heron



A Morning Walk



Gray Squirrel



Deer in the Cornfield

Kayaking Is Growing in Popularity Along the Yadkin

Kayaking is a great summer past time! One way to enjoy the Yadkin River is by taking a “kayak paddle trip” down from W. Kerr Scott Dam to Smoot Park. Travel time, depending on streamflow, is between two to three hours.

If you choose to take the paddling challenge, please follow these travel safety and convenience tips:

Be sure and wear a life jacket, also known as a *Personal Flotation Device (PFD)*.

Use caution around downed and overhanging trees along the river.

Never paddle alone! Always go with a friend!

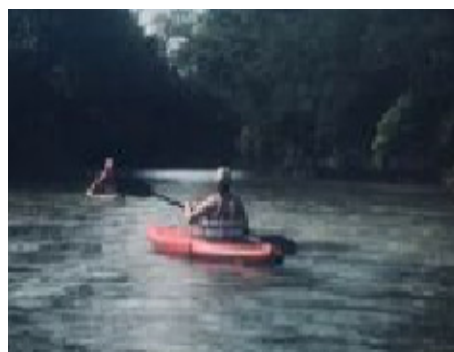
Let friends or family know where you’re going and when you should return.

Take along plenty of snacks and drinking water.

Use sun screen and dress for temperature and weather changes.

Check the weather forecast and avoid paddling during stormy weather periods.

Place your cell phone in a waterproof container and secure vehicle keys and any other personal items.



When you’re ready to begin your “river experience”, several Wilkes County outfitters are ready to assist you. They are:

Cooks Outfitters - 100 West Main Street, Wilkesboro -

Ph #: 336- 990-5100

Cooks additional location - 1402 Willow Lane in North Wilkesboro -

Ph #: 336-667-4121

Foothills Outdoor Adventures - Hwy 268 below Kerr Scott Dam -

Ph #: 336-990-0001

Roaring River Canoe Rentals - Cotton Mill Road in Roaring River-

Ph #: 336-957-6147

For more information on paddling opportunities, you may contact the Greenway office at: 336-651-8967



Kayakers in the above photos are shown making the best of a bad situation during the flooding by paddling on the greenway.

Our Friends, Contributors and Sponsors

Members of Friends of the Yadkin River Greenway

(A-C) Jim and Rose Andrews, Wayne and Zedena Barker, Harvey and Ginger Barlow, Leo and Ila Baugham, Wayne and Zedena Barker, Bob & Carol Black, Gary D. Blevins, Bill and Sharon Benson, Carolyn Brookshire Pardue, Mike and Dianna Bullock, Karen and Harold Bumgarner, Edwin Canter, Phil and Cecilia Carlson, Carson Foundation, Kin and Vicki Church, William and Lynn Clark, Bill and Karen Clifton, Anne Clifton, Sonny and Piper Church, Mrs. George Collins, Howard and Brenda Colvard, Rick and Trish Cook, Cubic Inc., and Ed and Ramona Curtis

(D-K) Lois Ann Doss, Stan and Susan Dudek, Allen and Audrey Dyer, Ginger Edmiston and Bobby Johnson, Camille Eller, Claudia Eller Tolbey, Mike Eller, Kim and Claude Faw, Chuck Forester, Rayanne Francis, Martha Glass, Russell and Lorraine Golds, Ruth Graham, Norma Greene, Ted and Jacquelyn Hall, Bill and Ruth Harris, Vaughn and Francis Hayes, Lee Herring, Leonard G. Herring Family Foundation, Mr. and Mrs. James R. Hicks III, James M. Huffman, Rebecca Hubbard, Alison Huskey, Charles and Janet Jackson, Scott Jessee and Laura Yaines, Gary and Madelene Johnson, Keith and Amanda Johnston, Rob and Patsy Jones, Petro Kulynych Family Foundation I and Petro Kulynych Family Foundation II

(L-P) Arnold and Becky Lakey, Gerald and Linda Lankford, Dean and Susan Ledbetter, Pete and Wilma Lovette, Carroll Lowe, Pete Mann, Richard and Dot Marlow, John and Freida Matthews, Pam and Drew Mayberry, Carl McCann, Mike and Donna McNeil, Tim Murphy, Andrew and Pam Mayberry, Martha Nichols, Sandra and John Oliver, Russel Pearson, Lisa Pardee, Marilyn Payne, Carolyn Frazier-Pardue, and Ned and Betty Pierce

(R-Z) Nancy Ricketts, Bill and Hedy Ryerson, Chuck and Belinda Smithy, Gordon Smoak, Jim and Luci Smoak, Mary Spears, Larry and Diane Stone, Stone Foundation, Steve and Kay Steele, Laura Stroud, Sam Stroud, Walter and Doris Stroud, Tina Taracido, FW and Martha Townes, Jim Sturdivant, David Wiles, Charlie and Mary White, Betsy Welborn, Graham and Teresa Wyche, Fran and Tim York, and Randall Zirkle

Walker Level Members (\$100-\$499) Fern Absher, Harvey and Ginger Barlow, Kin and Vicki Church, William and Lynn Clark, Bill and Karen Clifton, Mrs. George B. Collins, Rick and Trish Cook, Cubic Incorporated, Allen and Audrey Dyer, Ginger Edmiston and Bobby Johnson, Camille Eller, Kim and Claude Faw, Carolyn Brookshire Pardue, Chuck Forester, Russell and Lorraine Golds, Bill and Ruth Harris, Vaughn and Frances Hayes, James Huffman, Robert Joines, Gary and Madeline Johnson, Patsey Jones, Keith and Amanda Johnston, Arnold and Becky Lakey, Pam and Drew Mayberry, Ed and Alison McCorick, Tim and Heather Murphy, Martha Nichols, Lisa Pardee, Ned and Betty Pierce, Bob and Nancy Ricketts, Brad and Melanie Shinaman, Jim and Luci Smoak, Mary Spears, Daine and Lanny Stephens, Stone Foundation, and William Watts,

Hiker Level Members (\$500-\$1499): Phil and Cecilia Carlson, Leonard G. Herring Family Foundation, James Huffman, Mike and Donna McNeil, Steve and Kay Steele, Laura Stroud, and Graham Wyche

Recognition Wall Donors: Jogger (\$1,500 to \$2,999) total contributions: John & Fran Bond, Margaret & Thomas McMahan, Brenda & Carl Page, Jack Anderson, Kimberly & Brian Peace, Betty & Clarence Benton, Wilkes Journal-Patriot, Vicki & Bob Taylor, (continued)

(Jogger Level Continued) Mary Iva & Jim Gray, Wilkesboro Down Town Merchants, Darrel Rathmell, Mary & Bill Marlow, Betty Reinhardt, Stephen J. Wessels, Dot & Richard Marlow, Donna and Mike McNeil, The North Wilkesboro Rotary Club, Wilma and Pete Lovette, Beverly & Gaither Keener, Martha, Charlotte, William & "B" Towns, Northwestern Bank, Kiwanis Club of North Wilkesboro, Frances & Bill Casey, Blue Ridge Engineering, Mary Lee Culler, Kim and Claude Faw, Mark and Patricia Pegram, Ed & Patricia Sturdivant, Dr. & Mrs. John Bennett, Dr. & Mrs. Brad Shina-man, Autumn Nichols, Vicki & John Barker, Michelle & John Pontzer, Dr. David Sargent & Dr. Barry Ellis, Paul & Joyce Anderson, Meadows Mills, Inc., June & Bob Hege, David & Lisa Factor, Dr. Joseph H. Johnson, Patricia W. Johnson, Wanda & David Henson, Steve & Ann Palmer, Carol Stone, ECMD, Inc., Women's Service League of Wilkes, Wilkes Community Foundation, Kodak, Mildred R. Turner, Vicki & Jeff Gray, Dr. Joseph H. Johnson & Patricia Johnson, Claude and Kim Faw and Bill and Ruth Harris and Ed Greene.

Pathfinder (\$3,000 to \$4,999) total contributions: Hall Petroleum Co., Inc., Heather & Tim Murphy, Lisa & Perry Jennings, Karolen & Tom Bowman, Camille Lovette Eller, First Union Bank, John E. Gygax, Ken and Laura Welborn, Cooks Inc., Pat McNeill Day, Pete Mann, Nancy & Bob Ricketts, Mr. & Mrs. C.O. Lovette, Mr. & Mrs. Ralph Wooten, Ray Stroud, RMC Metromont Materials, Kim & Jug Shumate, Ina Parker, Kathy & Craig Bennett, Duncan Electric Corporation, Dr. & Mrs. Kenneth Curl, William M. Duncan, Sr., Abby, Andrew, Jan & Dennis Huggins, Ned and Betty Pierce, Mary & Ed Spears, Advantage West-North Carolina, Gardner Glass Products, Greg Stikeleather and Charlie & Mary White

Explorer (\$5,000 to \$9,999) total contributions: Brushy Mountain Power Sports, Randell K. Hayes, Shirley and Alvin Sturdivant, Reins-Sturdivant Funeral Home, First Citizens Bank, Freida and John Matthews, Mark and Teresa Church, Frances and Vaughn Hayes, Joe and Lu Ann Love, Vulcan Materials, BB and T, Luci and Jim Smoak, In Honor of Rose S. Andrews, Yadkin Valley Bank, Bruce and Vicki Church, Lena R. Lovette, Duke Energy Company, Wilkes Community Foundation, American Drew and La-Z-Boy Co. Wachovia Foundation, Carolyn and Billy Bare, Kin and Vicki Church, Carolina Realty, Inc. Joyce and Nick Cirillo and Chuck Forrester

Trailblazers \$10,000 and up total contributions: Carson Foundation, Duke Energy, Jane & David Kim, Rusty & Duane Smith, Becky & Arnold Lakey, Pam & Lee Herring, Judy & JC Faw, Children of Rachel N. & Vernon S. Church, Larry & Diane Stone, Wilkesboro TDA, Lanny & Diane Stephens, The Jim Shumate Family, Overmountain Victory National Historic Trail, National Park Service, Rose & Leonard Herring, David and Connie McNeill, Tyson Foods, Thomas Frazier, MD., Keith & Amanda Johnston, Lorene & Robert Joines, Sandy, Matthew & Jim Faw, Petro Kulynych Family Foundation, I and II, Cubic Inc., Willis Bryant, Debbie & "Mule" Ferguson, NC DENR, Tamm & Cam Finley, Friends of Bran Goad, NC Department of Transportation, Z. Smith Reynolds Foundation, Lowes's Charitable and Educational Foundation, Kay & Steve Steele, Dwight & Anne Pardue, Brushy Mountain Water Co., Gwyn F. "Duck" Vannoy, NC Water Resources, NC State Parks, Wake Forest Baptist Hospital Foundation, Wilkes Health Foundation, Ellen Foster Estate and The Cook Family Foundation.

How to Attain Recognition Wall Status

Once you become a Friend of the Greenway, your contributions are continually tabulated. As you make additional contributions, you will progress through the donation membership levels. Once your combined contributions reach \$1,500, your contributions will be recognized as a "Jogger" and your name will be engraved on a bronze plate and placed on the recognition wall!

See the Sponsorship and Friends Levels on the back of this newsletter!!

If you have questions about becoming a Friend of the Greenway, call our office at: 336-651-8967 or visit our web page at:

www.yadkinrivergreenway.com

**The Yadkin River Greenway
Council Newsletter**

Yadkin River Greenway Council
P. O. Box 191
North Wilkesboro, NC 28659

Phone: 336-651-8967
Email: yrgreenway@pcshome.net



Become A Friend Of The Greenway!!

The **Friends of the Greenway** campaign has completed another year as a “grass roots” support organization. Friends of the Greenway added 15 new members during 2020 for a grand total of 330 past or present members! Of these, many members renewed their membership during the past year. We hope all will renew during 2021!

Friends of the Greenway contributions, over the past 18 years, now total \$214,492. 00! These donations go a long way towards covering the administration expenses of the Yadkin River Greenway Council. This enables the Council to fulfill its mission of developing a greenway system in our community. Annual membership is open to all. And, since the Council is a 501(C)3 non-profit organization, membership dues are usually tax deductible.

We offer opportunities to our members to volunteer time on specific greenway events and projects, helping in the greenway office, and contacting prospective new members. This newsletter and other communications will, hopefully, keep our members informed of Greenway activities.

Each January, or based on membership anniversary date, we will begin contacting each Friend of the Greenway to consider the renewal of their membership and to continue their support of the greenway. Regular memberships are: \$20 for individuals, \$40 for families, \$12 for youth, \$100 for businesses, and \$50 for civic organizations.

Also, if you would like to be recognized as a **Friend of the Greenway**, the donation categories are:

Walker: \$100 to \$499
Hiker: \$500 to \$1,499
Jogger: \$1,500 to \$2,999
Pathfinder: \$3,000 to \$4,999
Explorer: \$5,000 to \$9,000
Trailblazer: \$10,000 and up

Once you become a Friend of the Greenway, your contributions are constantly tabulated. As you make additional contributions, you will progress through the donation ranks of membership levels mentioned above. Once you ultimately reach the combined contribution level of \$1,500, your contributions will be recognized as a **Jogger** and a bronze recognition name plate will be installed on the Greenways Recognition Wall for all to see!

Thanks again for your continuing support! If you have any questions, please call the Greenway office at: 336-651-8967.

RG Absher, Executive Director

www.yadkinrivergreenway.com
